



# Silhouette Custom Basic

Pricing Rev. 3/10/16  
Form Rev. 3/10/16

For ease of ordering, contact Pindot Customer Service  
Toll Free at: 800-451-3553  
Fax: 800-834-4153

Attn: Pindot, 899 Cleveland St. Elyria, OH 44036

E-mail Order Form to:  
[ElyriaCustomSeating@invacare.com](mailto:ElyriaCustomSeating@invacare.com)

Company Name:	Date:
*Contact Name:	E-mail Address:
*Ship To Address:	Phone Number:
*City/State/Zip:	Cell Phone Number:
*Account #:	Fax Number:
Client Reference:	*Purchase Order #:
	Serial Number: <i>*for internal use only</i>
	Ship Date: <i>*for internal use only</i>

Mobility Base Information			
Brand:		Model:	
Frame Width:		Frame Depth:	
Seat to Back Angle:		Seat to Back Gap:	

<input type="checkbox"/>	Is This Order Going "WITH CHAIR" (NEW Invacare Chair) *
<input type="checkbox"/>	Is This Order Going "ON CHAIR" (NEW Invacare Chair) *

When ordering cushions "With Chair" / "On Chair" fax this order form and the order form for the Invacare Chair to: Pindot Customer Service at 1-800-834-4153

Invacare quote # : \_\_\_\_\_

Patient Information	
Gender:	Patient Width at Hips:
<input type="checkbox"/> Male	_____ inches
<input type="checkbox"/> Female	Patient Width at Chest:
	_____ inches

<input type="checkbox"/>	Is This Order Going "ON CHAIR" (NEW Freedom Designs Chair) **
--------------------------	---

\*\* If a Freedom Designs chair quote is to be converted please contact Freedom Designs customer service at 1-800-331-8551. Freedom Designs quote/PO # : \_\_\_\_\_

Cushion Design Information	
<input type="checkbox"/>	User Design File Included with this order - Provide FILE NAME: _____ .SM2 Seat <i>*Go to Page 2</i>
<input type="checkbox"/>	Apply the Design Specifications as Listed Below _____ .SM2 Back <i>*Go to Page 2</i>

AR20	Desk Length Armrest (Pair)	\$250.00
AR24	Full Length Armrest (Pair)	\$250.00
LB07	Small Footrest (Pair)	\$235.00
LB08	Large Footrest (Pair)	\$235.00
LT06	Legrest Tops (Pair)	\$235.00
TR40L	Tray Receptacle - Left	\$140.00
TR40R	Tray Receptacle - Right	\$140.00
HR15	Headrest Adapter Plate	\$45.00

SB05	ContourU Pelvic Strap	\$45.00
SLK00**	Straight Lateral (Right or Left)	\$125.00
SLK05**	1/2" Offset Lateral (Right or Left)	\$125.00
SLK10**	1" Offset Lateral (Right or Left)	\$125.00
SLK15**	1.5" Offset Lateral (Right or Left)	\$125.00
SL10S	Lateral Insert Replacement Set	\$275.00
PDSLML	Mult-Bar Swingaway Lateral - Medium (Pair)	\$290.00
PDSLRL	Mult-Bar Swingaway Lateral - Large (Pair)	\$290.00

\* HR15 Required when using Contour U pan

\*\* Laterals Fit the Silhouette KwikFit Shell Only

## Comments and Special Instructions

### Seat Cushion Specifications

\$971.00

Cushion Width: \_\_\_\_\_ inches (Variable from 8" - 24")

Seat cushion 21" or greater, additional cost applies - see SO80 on price list

Cushion Depth: \_\_\_\_\_ inches (Variable from 8" - 24")

Seat cushion 21" or greater, additional cost applies - SO80 \$75.00

#### Mounting

	TFEP	Existing Pindot Pan: _____ Width x _____ Depth	
	TFNP	New Pindot Pan	\$215.00
	CM06T	Wood Mount with T-nuts	\$215.00
	CM06	Wood Mount without T-nuts	\$150.00
<b>****If selecting Wood Mount specify Cover Type****</b>			
		Cover Type Draw String Cover	
		Cover Type Zippered Cover	
		Cover Type 2-Piece Velcro Cover **	
	IDB/SM	Infinity Drop Base 14" - 16" wide	\$240.00
	IDB/MD	Infinity Drop Base 17" - 19" wide	\$240.00
	IDB/LR	Infinity Drop Base 20" - 22" wide	\$291.00
		Other	

\*\* 2-piece cover not available if undercut selected

Unless otherwise specified Seat Cushion will have Flat Bottom and Hook and Loop Velcro Mount and 4" Curved Rear

#### Foam Type

	Soft	
	Firm	
	Extra Firm	\$110.00

#### Removable Covers

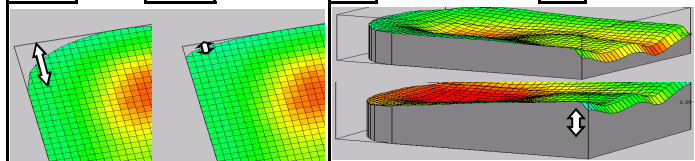
	PLRTK	Polartek	When opting a 2-tone fabric selection must be indicated as "A" for contact surface, "B" for non-contact surface
	LYCRA	Lykra	
	DARLEX	Darlexx	
	DT-2	Standard Dartex	
	DT-2R	Reversed Dartex	
	L-05	Black Rubber Backed Lykra	
	L-06	Grey Rubber Backed Lykra	
	L-13	Light Blue Rubber Backed Lykra	
	L-14	Red Rubber Backed Lykra	
	L-15	Teal Rubber Backed Lykra	
	L-18	Purple Rubber Backed Lykra	
	L-19	Burgundy Rubber Backed Lykra	
	L-20	Blue Rubber Backed Lykra	
	L-23	Green Rubber Backed Lykra	
	L-24	Spacer Mesh	

#### Additional Removable Covers

	SO25 Additional Cover Fabric:	\$210.00
	SO40 Inner Recovery Cover (Zippered)	\$210.00

**Radius:** (4" STD) **Wedge:** inches

1 inch     3 inch     Front to Back     Left to Right  
 2 inch     4 inch     Back to Front     Right to Left



#### Mounting Hardware

	HWPMMK01	Pan Mounting Kit - 1 inch	\$205.00
	HWPMMK78	Pan Mounting Kit - 7/8 inch	\$205.00
	HWWMK01	Wood Mounting Kit - 1 inch	\$205.00
	HWWMK78	Wood Mounting Kit - 7/8 inch	\$205.00
	OCMK01	J & L Brackets - 1 inch (rail cut only)	\$175.00
	OCMK78	J & L Brackets - 7/8 inch (rail cut only)	\$175.00
	FDI-538	Econo-Eze (includes seat & back hardware)	\$637.00

#### Seat Cushion Modifications

Additional Global Deepening \_\_\_\_\_ inches

Shift Contour    Left \_\_\_\_\_ inches  
Right \_\_\_\_\_ inches

Raised Right Adductor    Width \_\_\_\_\_ inches  
Height \_\_\_\_\_ inches

Raised Left Adductor    Width \_\_\_\_\_ inches  
Height \_\_\_\_\_ inches

SO90 Leg Length Discrepancy \$75.00  
 Shorten Left Leg by \_\_\_\_\_ inches  
 Shorten Right Leg by \_\_\_\_\_ inches  
 Longer Leg will be the indicated cushion length

SO16 Growth Style \$75.00  
 Length= \_\_\_\_\_ " + Growth \_\_\_\_\_ " = Total Length \_\_\_\_\_ "

	SO70	Railcut to _____ " Width x _____ " Depth	\$75.00
	SO74	Railcut to Contour U Pan	\$75.00
	SO73	Railcut to Infinity Drop Base	\$75.00

VH02 Vent Holes \$150.00

SO77 Undercut \$75.00

Additional Minimum Thickness \_\_\_\_\_ inches

Right Leg Trough    Deepen \_\_\_\_\_ inches  
Reduce \_\_\_\_\_ inches

Left Leg Trough    Deepen \_\_\_\_\_ inches  
Reduce \_\_\_\_\_ inches

Raise Abductor    Width \_\_\_\_\_ inches  
Height \_\_\_\_\_ inches

SO92 Solid Wood Insert (sling reduction) \$70.00

	CM30G	Recess with Gel Insert*	\$235.00
		Recess with Star AirFlow Insert	
		14" wide	\$299.50
		16" wide	\$299.50
		18" wide	\$434.30
	CM30	Recess Only*    Qty: _____	\$105.00
		1 inch or 2 inch Depth: _____	
	CM09	Soft Spot - Std Foam*    Qty: _____	\$165.00
		1 inch or 2 inch Depth: _____	
	CM09V	Soft Spot - Visco Foam*    Qty: _____	\$275.00
		1 inch or 2 inch Depth: _____	
	VF05	Visco Foam Overlay 1/2"	\$275.00

\* Specify size & location in comment section

# Back Cushion Specifications

\$971.00

Cushion Width: \_\_\_\_\_ inches (Variable from 8" - 24")

Back cushion 21" or greater, additional cost applies - see SO80 on price list

Cushion Height: \_\_\_\_\_ inches (Variable from 8" - 24")

Back cushion 21" or greater, additional cost applies - SO80 \$75.00

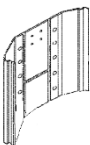
## Foam Type

Soft	
Firm	
Extra Firm	\$110.00

## Mounting

SKF30	KwikFit Mounting for Backs	\$400.00
-------	----------------------------	----------

KwikFit Includes: Shell, Angle Adjustable Interfacing Hardware, Attachment Points for Pindot Headrest, and a custom Sewn Cover  
 Wheelchair Frame Width \_\_\_\_\_ inches (Variable 12" to 24")  
 KwikFit Mounting for Backs will fit between the wheelchair canes.  
 Cushion and Shell will be made 2 1/2" smaller than the wheelchair width indicated. Standard KwikFit Mounted Back will have a 2" curved top.



TFEP	Existing Pindot Pan: _____	Width x _____	Depth _____
TFNP	New Pindot Pan		\$215.00
CM06T	Wood Mount with T-nuts		\$215.00
CM06	Wood Mount without T-nuts		\$150.00

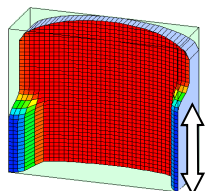
\*\*\*\*If selecting Wood Mount specify Cover Type\*\*\*\*

	Cover Type Draw String Cover	
	Cover Type Zippered Cover	
	Cover Type 2-Piece Velcro Cover **	
SO66	Personal Back Shell	\$502.00
ELITE	Matrx Elite Shell	\$450.00
Other		Call C/S

\*\*\*\*Unless otherwise specified Back Cushion will have Flat Bottom,

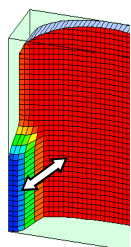
Hook and Loop Velcro Mount and 4" Curved Top\*\*\*\*

## Back Cushion Modifications



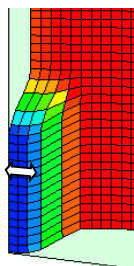
### Trunk Lateral Height:

Right \_\_\_\_\_ inches  
 Left \_\_\_\_\_ inches



### Lateral Depth:

Right \_\_\_\_\_ inches  
 Left \_\_\_\_\_ inches



### Lateral Thickness:

Right \_\_\_\_\_ inches  
 Left \_\_\_\_\_ inches

## Comments and Special Instructions

## Removable Covers

PLRTK	Polartek
LYCRA	Lycra
DARLEX	Darlexx
DT-2	Standard Dartex
DT-2R	Reversed Dartex
L-05	Black Rubber Backed Lycra
L-06	Grey Rubber Backed Lycra
L-13	Light Blue Rubber Backed Lycra
L-14	Red Rubber Backed Lycra
L-15	Teal Rubber Backed Lycra
L-18	Purple Rubber Backed Lycra
L-19	Burgundy Rubber Backed Lycra
L-20	Blue Rubber Backed Lycra
L-23	Green Rubber Backed Lycra
L-24	Spacer Mesh

When opting a 2 - tone fabric selection must be indicated as "A" for contact surface, "B" for non - contact surface

## Additional Removable Covers

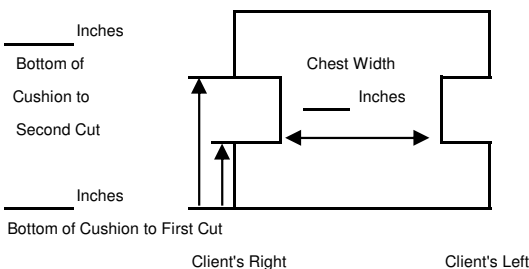
SO15 Additional Cover Fabric:	\$210.00
SO40 Inner Recovery Cover (Zippered)	\$210.00

## Mounting Hardware

HWPMK01	Pan Mounting Kit - 1 inch	\$205.00
HWPMK78	Pan Mounting Kit - 7/8 inch	\$205.00
HWWMK01	Wood Mounting Kit - 1 inch	\$205.00
HWWMK78	Wood Mounting Kit - 7/8 inch	\$205.00
OCMK01	J & L Brackets - 1 inch (rail cut only)	\$175.00
OCMK78	J & L Brackets - 7/8 inch (rail cut only)	\$175.00
FDI-596	Econo-Eze (Back Hardware Only)	\$596.00
HWABK	Adjustable Back Mounting Hardware	\$260.00

## Back Cushion Modifications

SO17	Fill Gap		
Sensor Grid _____ + _____ inches = _____ Total Cushion Height			
SO70	Railcut to: _____	Width x _____	Depth _____
SO74	Railcut to Pindot Pan		\$75.00
SO78	Railcut to KwikFit		\$75.00
VH02	Vent Holes		\$150.00
SO76	I-Cut provide measurements below:		\$75.00



CM30	Recess Only*	Qty: _____	\$105.00
	1 inch or 2 inch	Depth: _____	
CM09	Soft Spot - Std Foam*	Qty: _____	\$165.00
	1 inch or 2 inch	Depth: _____	
CM09V	Soft Spot - Visco Foam*	Qty: _____	\$275.00
	1 inch or 2 inch	Depth: _____	
VF05	Visco Foam Overlay 1/2"		\$275.00

\* Specify size & location in comment section