



NXT-SE
Generation NEXT

**Adult Manual Wheelchair
Transport Package Optional**



Our kids are our passion.[™]
2241 N. Madera Rd

Simi Valley, CA 93065

Phone: (800) 331-8551 Fax: (888) 582-1509

www.freedomdesigns.com

Bill to:	Date: _____ P.O. # _____	Ship to:	Company: _____
	Company: _____		Address: _____
	Buyer: _____		City: _____ State: _____ Zip: _____
	Marked For: _____		Phone: _____

Description	Part No.	Retail	Description	Part No.	Retail
-------------	----------	--------	-------------	----------	--------

NXT Frame Type

- Folding NXT - Adult** (E1161) **NXT-30305** **\$2875**
- Rigid NXT - Adult** **NXT-30315** **\$2750**
(E1161 code applied for)
Note: A seating system must be purchased separately
No seating system is provided
Note: Includes Freedom Future Fit Program

Tilt Activations

- Single Lever Hand Activated Tilt** **n/c**
Note: Lever installed on and behind right back post tube
Note: Not available with vent and battery tray options
- Dual Lever Hand Activated Tilt** **n/c**
Note: Must be selected for vent & battery tray options
- Single Pedal Foot Activated Tilt** **n/c**
Note: Pedal installed inside right rear side frame
Note: Not available with vent and battery tray options

Vent & Battery Trays

- Vent Tray - Fixed** (E1029) 11-1000 **\$413**
- Battery Tray - Fixed** 11-5000 **\$386**
Note: Not available with transport option
Note: Only on 14" and wider frames

Transport Option

- Transport Package** **NXT-99997** **\$200**
Note: NXT with transport option is available installed on NXT frame only and with WC-19 approved Freedom Seating Systems installed on NXT
Note: Not available with vent and battery trays

NXT Frame Colors

Powder Coat Applications

- | | |
|---|---|
| <input type="radio"/> Black n/c | <input type="radio"/> Pacific Blue n/c |
| <input type="radio"/> Blizzard Blue n/c | <input type="radio"/> Passion Purple n/c |
| <input type="radio"/> Blue Blast n/c | <input type="radio"/> Pink Parfait n/c |
| <input type="radio"/> Blue Stardust n/c | <input type="radio"/> Really Red n/c |
| <input type="radio"/> Cosmic Purple n/c | <input type="radio"/> Red Sunset n/c |
| <input type="radio"/> Extreme Green n/c | <input type="radio"/> Sparkle Green n/c |
| <input checked="" type="radio"/> Maple Syrup Brown n/c | <input type="radio"/> Twilight n/c |
| <input type="radio"/> Mystic Teal n/c | <input type="radio"/> Yellow n/c |
| <input type="radio"/> Octane Orange n/c | |

Powder Coat Applications with High Reflective Starlight

- Black High Reflective Starlight **NXT-BHRS** **\$150**
- Blue Blast Reflective Starlight **NXT-BBHRS** **\$150**
- Maple Syrup Brown Reflective Starlight **NXT-MSHRS** **\$150**
- Passion Purple High Reflective Starlight **NXT-PPHRS** **\$150**
- Really Red High Reflective Starlight **NXT-RRHRS** **\$150**
- Pink Parfait High Reflective Starlight **NXT-PINKHRS** **\$150**
- Yellow High Reflective Starlight **NXT-YHRS** **\$150**
Note: High reflective starlight is a second coating designed to reflect light to make night travel safer

**Frame Dimensions
Specify Frame Width**

- | | | | | |
|---------------------------|---------------------------|---------------------------|------------------|------------|
| <input type="radio"/> 14" | <input type="radio"/> 15" | <input type="radio"/> 16" | NXT-30240 | n/c |
| <input type="radio"/> 15" | <input type="radio"/> 16" | <input type="radio"/> 17" | NXT-30290 | n/c |
| <input type="radio"/> 16" | <input type="radio"/> 17" | <input type="radio"/> 18" | NXT-30260 | n/c |
| <input type="radio"/> 17" | <input type="radio"/> 18" | | NXT-30261 | n/c |
| <input type="radio"/> 18" | | | NXT-30262 | n/c |
| <input type="radio"/> 19" | | | NXT-30263 | n/c |
| <input type="radio"/> 20" | | | NXT-30264 | n/c |

Note: The 14", 15" & 16" widths adjust 2 additional inches in width
The 17" adjust 1 additional inch
The 18", 19" & 20" are set requiring parts to make width adjustments
Any width between 14" and 20" may be specified
Note: Frame width dimensions are measured from the outside of seat tube to outside of seat tube

**Back Post Locations
Specify Frame Length**

- Medium Frame & Short Tilt Bracket** **NXT-30512** **n/c**
- 14" **NXT-30506** **n/c**
- 15" **NXT-30521** **n/c**
- 16" **NXT-30522** **n/c**
- 17" **NXT-30523** **n/c**
- 18" **NXT-30524** **n/c**

Note: 22" & 24" wheels not available with medium frame and short tilt bracket
Note: Floor to seat rail height range is 12.5" to 16.5"

- Medium Frame & Tall Tilt Bracket** **NXT-30540** **n/c**
Note: Tall tilt bracket increases floor to seat rail height by 1.5"
- 14" **NXT-30506TP** **n/c**
- 15" **NXT-30521TP** **n/c**
- 16" **NXT-30522TP** **n/c**
- 17" **NXT-30523TP** **n/c**
- 18" **NXT-30524TP** **n/c**

Note: Floor to seat rail height range is 14" to 18.5"

- Long Frame & Tall Tilt Bracket** **NXT-30520** **n/c**
Note: Tall tilt bracket increases floor to seat rail height by 1.5"
- 16" **NXT-30522** **n/c**
- 17" **NXT-30523** **n/c**
- 18" **NXT-30524** **n/c**
- 19" **NXT-30527** **n/c**
- 20" **NXT-30528** **n/c**

Note: Floor to seat rail height range is 14" to 18.5"

Note: The NXT comes in 3 sizes. Each size has 4" of back post tube adjustment
Frame depth is measured from the front of the back post tube to the front end of the NXT seat frame

To determine back post tube location, add seating and hardware thickness (planar back and hardware typically equals 2") to seating cushion depth

Example: Seating cushion in front of back support

Seating cushion depth = 12"
Back and hardware thickness = 2"
Back post tube location = 14"

Seat Rail Extensions

Please choose frame size and extension length

- | | | | |
|------------------------------|----------------------------|------------------|------------|
| <input type="radio"/> Medium | <input type="radio"/> Long | | |
| <input type="radio"/> 2" | <input type="radio"/> 2" | NXT-30525 | n/c |
| <input type="radio"/> 3" | <input type="radio"/> 3" | NXT-30530 | n/c |
| | <input type="radio"/> 4" | NXT-30531 | n/c |

Note: Seat rail extensions may limit tilt range with 22" & 24" rear wheels
Extensions may affect stability when in the tilt position
Adjusting seat rail forward will help compensate for possible tilt range limitations and instability when in the tilted position

Date: _____ P.O.# _____

Marked for: _____

Description Part No. Retail

Description Part No. Retail

Back Post Tubes

- Traditional Bend Push Handles** NXT-30518 n/c
 - Ergo Bend Push Handles** NXT-30519 n/c
- Note: Push Handle Extensions and Stroller Handle Extensions not recommended with Ergo Bend Push Handles



Traditional



Ergo

Height Options

- Short (19" High)** NXT-30515 n/c
 - Medium (23" High)** NXT-30514 n/c
 - Tall (26" High)** NXT-30516 n/c
- Note: Back post tube heights are measured from top of seat frame to top of handle bend

Extension Options

- Push Handle Extension** NXT-30513 n/c
 - Width Adjustable Removable Stroller Handle Extension** NXT-30526 **\$125**
 - Individual Stroller Handle Extensions (pair) Removable** NXT-30517 **\$100**
- Note: Stroller handle extensions add approximately 6.5" to push handle height
Note: Push Handle Extensions and Stroller Handle Extensions not recommended with Ergo Bend Push Handles



Push Handle Extension



Stroller Handle Extension



Individual Stroller Push Handles

Swing Away Hangers

- Omit Hangers & Footplates** NXT-33000 **(\$30)**
- Pop-Up Swing Away 75° Hanger** NXT-30280 n/c
- Pop-Up Swing Away 90° Hanger** NXT-30281 n/c
- Latch Style Swing Away 75° Hanger** NXT-30282 n/c
- Latch Style Swing Away 90° Hanger** NXT-30283 n/c
- Pop-Up Swing Away Elevating (E0990)** NXT-30279 **\$235**



90° Pop-up



75° Latch Style



Elevating

Hanger Extensions

- 4.5" Extension** NXT-36402 **\$ 55**
 - 6.5" Extension** NXT-36403 **\$ 65**
 - High Mount Clamp (K0037)** NXT-36407 **\$100**
- Note: 6.5" not available with 90° hangers
Note: High Mount Clamps not available on 75° hangers

Knee to Heel Measurement _____ **Inches**

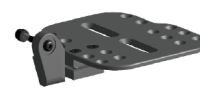
Hanger Extension Configuration	Knee to Heel Range (from seat rail)
Hanger and high mount clamp	4" - 9"
Hanger only	6" - 9"
Hanger and 4.5" extension	to 13.5"
Hanger and 6.5" extension	to 15.5"

Foot Plate Options

- Omit Footrest Plate** NXT-36404 **(\$15)**
- Composite Flip Up** NXT-17070 n/c
- Kids Aluminum Angle Adj. Flip Up (K0040)** NXT-36020 **\$150**
Note: For Frames 14" wide and under
- Heel Loop (E0951)** NXT-36022 **\$ 50**
- Adult Aluminum Angle Adj. Flip Up with Heel Loop (K0040) (E0951)** NXT-36021 **\$150**
Note: For Frames 15" wide and over
- Omit Heel Loop** NXT-36023 n/c
- Aluminum Angle Adj. Footboard Removable** NXT-36029 **\$150**



Composite Flip-up Footplate



Angle Adjustable Flip-up Footplate



Removable Footboard

Armrests

Armrests Attached to Back Post Tube

- Omit Flip Back Arms** NXT-38209 **(\$20)**
- Flip Back Standard 13" Long** NXT-38204 n/c
- Flip Back Long 16" Long** NXT-38202 n/c
- Flip Back Telescoping (E0973)** NXT-38208 **\$100**
- Locking Flip Back Std. 13" Long (E0973)** NXT-38201 **\$235**
- Locking Flip Back Long 16" Long (E0973)** NXT-38200 **\$235**
- Locking Flip Back Telescoping (E0973)** NXT-38207 **\$260**

Armrests Attached to Seat Frame

- Single Post Height Adj. Removable (E0973)** NXT-38203 **\$235**
- Dual Post Removable** NXT-38205 n/c
- Dual Post Height Adj. Flip Back Removable (E0973)** NXT-38206 **\$245**

Armrest Pad

- Desk Length** NXT-38213 n/c
- Full Length** NXT-38214 n/c
Note: Full length on 16" armrests only

Seat Rail to Top of Armrest Measurement _____ **Inches**



Locking Flip Back Armrest



Single Post Height Adjustable Armrest



Dual Post Height Adjustable Removable Armrest

Date: _____ P.O.# _____

Marked for: _____

Description Part No. Retail

Description Part No. Retail

Front Caster Wheels

Wheel Locks

- Omit Caster Wheels** NXT-34333 n/c
- 3" Poly** NXT-34888 \$ 55
- 3" Light Up** NXT-34111 \$ 55
Note: 3" casters are recommended for low frame configurations
- 4" Poly** NXT-40000 \$ 65
- 4" Light Up** NXT-41000 \$ 99
- 4" x 1.4" Poly Aluminum Mag** NXT-43000 \$ 90
- 5" Poly** NXT-34555 n/c
- 5" x 1.5" Poly** NXT-34222 \$ 85
- 5" x 1.4" Poly Aluminum Mag** NXT-42000 \$ 90
- 6" Poly** NXT-34666 n/c
- 6" x 1.5" Poly** NXT-34999 \$ 85
- 6" x 1.4" Poly Aluminum Mag** NXT-44000 \$ 90
- 6" x 2" Poly with Tread** NXT-34444 \$ 90
- 6" Pneumatic (E2214 / E2215)** NXT-34667 \$ 75
Note: All 6" casters not available with all 16" rear wheel options
- 7" Poly** NXT-34777 \$ 75
- 7" x 1.5" Poly** NXT-34000 \$116
- 7" x 2" Poly** NXT-34200 \$116
Note: All 7" casters not available with all 12" rear wheel options

- Push to Lock** NXT-31501 n/c
- Pull to Lock** NXT-31506 n/c
- Wheel Lock Handle Extensions (E0961)** NXT-31801 \$ 60
- Foot Actuated Lock** NXT-31508 n/c
Note: Not available with vent tray or battery tray options
Note: If both foot actuated lock and manual wheel locks are ordered together, an "off-chair" charge will apply

Rear Anti-Tip

- Anti-Tip Tubes—Standard (E0971)** NXT-31603 \$ 95
Note: One pair of flip-up anti-tip tubes (no curb assist)
- Anti-Tip Tubes with Curb Assist (E0971)** NXT-31600 \$ 95
Note: Each anti-tip tube pair includes one with curb assist

Floor To Seat Rail Height Matrix

Rear Wheel	Front Caster	Short & Medium Frames Short Tilt Bracket	Medium & Long Frames Tall Tilt Bracket
12"	3"	13"	14.5"
12"	3"	15"	16.5"
12"	4"	15.5"	17"
12"	4"	16"	17.5"
12"	5"	15.5"	17"
12"	5"	16"	17.5"
12"	6"	15.5"	17"
12"	6"	16"	17.5"
16"	3"	12.5"	14"
16"	4"	13.5"	15"
16"	3"	14"	15.5"
16"	4"	14"	15.5"
16"	5"	14.5"	16"
16"	3"	15"	16.5"
16"	5"	15"	16.5"
18"	3"	13.5"	15"
18"	3"	14"	15.5"
18"	4"	14"	15.5"
18"	4"	15"	16.5"
18"	5"	15.5"	17"
18"	6"	15.5"	17"
18"	6"	16"	17.5"
20"	5"	15.5"	17"
20"	6"	15.5"	17"
22"	7"	n/a	18"
24"	7"	n/a	18.5"



Rear Wheels, Tires and Accessories
Mag Wheel Tire Options

- Omit Wheels and Axles** NXT-31524 (\$55)
- 12" Pneumatic Mag** NXT-31525 n/c
- 12" Poly Mag (E2218)** NXT-31526 \$ 35
- 12" Semi Pneumatic Mag** NXT-31523 \$165
Note: Handrims are not available with all 12" wheel options
Note: All 12" wheels not available with all 7" caster options
- 16" Pneumatic Mag** NXT-31530 \$ 40
Note: All 16" wheels not available with all 6" caster options
- 18" Pneumatic Mag** NXT-31533 \$ 35
- 20" Pneumatic Mag w/Alum. Handrim** NXT-31527 n/c
- 22" Pneumatic Mag w/Alum. Handrim** NXT-31528 n/c
- 24" Pneumatic Mag w/Alum. Handrim** NXT-31529 n/c
- Omit Handrims** NXT-31006 (\$25)
Note: 22" & 24" wheels not available with short tilt bracket
Note: Patented double locking safety axle receiver included at no charge

Spoke Wheel Tire Options

- 20" Pneumatic Spoke** NXT-31540 \$200
- 22" Pneumatic Spoke** NXT-31541 \$200
- 24" Pneumatic Spoke** NXT-31542 \$200
- Omit Handrims** NXT-31006 (\$25)
Note: 22" & 24" wheels not available with short tilt bracket
Note: Plastic coated handrims not available with spoke wheel options
Note: Patented double locking safety axle receiver included at no charge

Wheel Accessories

- Aluminum Handrims 16" & 18" (pr.)** NXT-31007 \$166
- Plastic Coated Handrims (pr.)** NXT-31005 \$117
Note: Plastic coated handrims not available with spoke wheels
Note: Handrims are not available with all 12" wheel options
- Airless Inserts (E2213)** NXT-31000 \$ 75

Rider Capacity - 225 lbs.

Date: _____ P.O.# _____

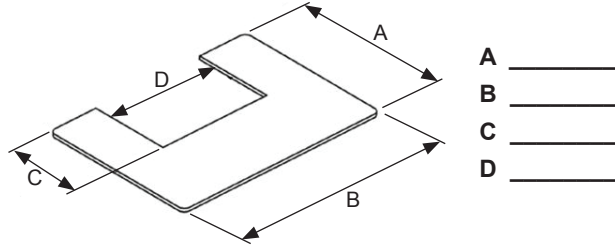
Marked for: _____

Description	Part No.	Retail
-------------	----------	--------

Description	Part No.	Retail
-------------	----------	--------

Accessories

- Medical necessities Bag** (black only) NXT-23207 \$ 67
- Back Pack** (black only) NXT-TFBP \$ 55
- Canopy** NXT-38750 \$150
- Canopy with Visor** NXT-38756 \$175
Note: Canopies on NXT with transport option must be removed during transport



Trays / Lapboards (E0950)

- Lexan Tray - No Hardware** 08-8000 \$156
- Lexan Tray - Adj. Knob Hardware** 08-6000 \$215
- EZ-Lite Lexan Tray - .25" Thick** 08-12000 \$167
- EZ-Lite Lexan Tray with Ribs** 08-13000 \$179
- Lexan Tray with 1" Locking Hooks** 08-15000 \$198
- .25" Lexan Tray -without Hardware** 08-17000 \$ 93

Solid Seat Options



Fixed Seat Pan



Removable Seat Pan



EE1



EZ-Lite 1

- Fixed Solid Seat Pan** NXT-39010 \$100
 Width _____ X Depth _____
- Removable Solid Seat Pan** NXT-39012 \$150
 Width _____ X Depth _____
- Solid Seat with Econo-EZE Hardware** EE1 \$548
Note: Uses 30 degree brackets at rear of cushion
- Solid Seat with EZ-Lite Hardware** EZ Lite 1 \$400
Note: Uses 30 degree brackets at rear of cushion

Solid Back Options

- Easy Conforming Back - Standard** 102-12000 \$839
Note: Uses 4 point hardware
- Easy Conforming Back - Standard with 2 J/L's, Glide Locks & Hinges** EZ Conf 2 \$839
Note: Uses seat to back attachment hinge
- Mod-2Econo2** Mod-2Econo2 Add \$ 45
Note: 2 Econo Eze clamps instead of 2 J/L's and Glide Locks for EZ Conf2
- Split Wing** Mod-2QQ \$186

Head Support Options

- Rock & Roll Headrest Hardware** 7708 \$385
- Chubbie Head Support Pad** 7756 \$184
 Small Medium Large
- Low Profile Occipital Headrest Pad** 7757 \$133
 Small Medium Large



Rock & Roll Headrest Hardware



Chubbie Headrest Support Pad



Low Profile Occipital Pad

***Pelvic Positioning Belts (E0978)**

Streamline - Two Point Padded

- Center Pull - Metal Push Button Buckle** SB-3332 \$ 88
- Center Pull - Metal Push Button Buckle with 1" Buckle & .75" Webbing** SB-3332-1 \$ 88
- Center Pull - EZ Release Push Button Buckle** SB-3334 \$ 88

Streamline - Non- Padded

- Center Pull - Metal Push Button Buckle Hipster - Two Point Padded** SB-3410 \$ 29
- Center Pull - Metal Push Button Buckle** HIP-3002 \$109
- Center Pull - EZ Release Push Button Buckle** HIP-3004 \$109

Hipster - Non-Padded

- Center Pull - Metal Push Button Buckle** HIP-3021 \$ 50
- Center Pull - Metal Push Button Buckle with 1" Buckle & .75" Webbing** HIP-3021-1 \$ 50

* Note: Many other belts are available - those shown above include some of our most popular
 Ask your customer service representative about additional styles