



Our kids are our passion.™

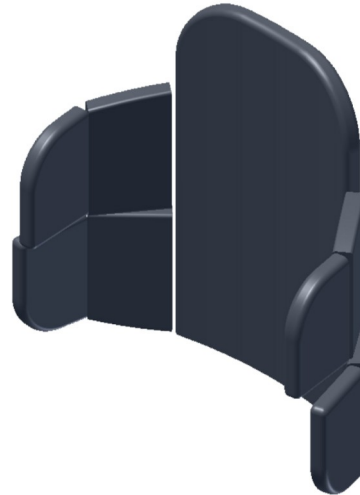
Easy Conforming Back - Standard

(Custom Back with Truck and Hip Lateral Control)



Customer Information:

Company Name: _____
 Dealer Name: _____
 City: _____
 Phone Number: _____
 Fax Number: _____
 E-Mail Address: _____
 Marked For: _____
 Quote To: E-Mail Fax



Wheelchair Specifications:

Model: _____
 Width: _____

1. Choose Hardware

- 102-12000 4 J's and L's and 4 Glide Locks \$839
- 102-17000 4 J's and L's and 2 Glide Locks with 2 Split Collars \$839
- 102-20000 4 Easy Clamps \$839
- EZ CONF2 2 J's and L's and 2 Glide Locks and Hinges \$839
- Heavy Duty Package (needed when frame is over 20" wide) Quote

2. Choose Modifications (may choose one or more)

- MOD-2QQ Split Outer Wings (wings are cut in half as standard) \$186
- MOD-2SS Laterals Upholstered Separately Foam Center Panel \$156
- MOD-2UU Wings Molded Together in Front (only 1 angle of adjustment) \$186
- MOD-2QPlateMate PlateMate Universal Headrest Plate \$ 38
 (PlateMate needed when not using Freedom headrest)
- MOD-2S Foam-in-Place Soft Medium \$210
- MOD-2Econo4 Hardware Upgrade with 4 Econo-Eze Hardware \$135
- MOD-2Econo2 Hardware Upgrade with 2 Econo-Eze Hardware \$ 45
 (needed when using a hinge)

3. Choose Upholstery

- Black Lycra
- Black Dartex
- Black Reverse Dartex
- Other Type _____ Color _____

4. Choose Foam (standard foam is 1/2" 3# foam with 1/2" soft Sunmate overlay)

Foam		Base Layer	Overlay
3# Foam	\$ 22 per 1"		
Soft Sunmate	\$ 85 per 1"		
Medium Sunmate	\$ 85 per 1"		
Pudgee	\$202 per 1"		
Soft T-Foam	\$ 92 per 1"		
Medium T-Foam	\$ 92 per 1"		

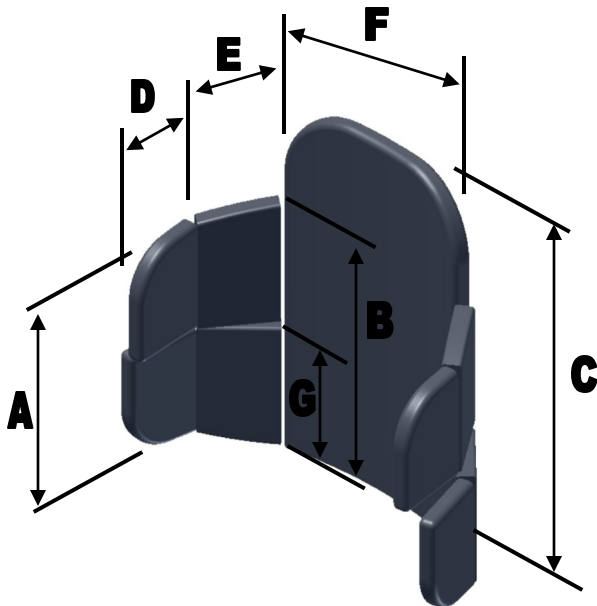


Our kids are our passion.™

Easy Conforming Back - Standard

(Custom Back with Truck and Hip Lateral Control)

Width	Dimensions					
11" - 12"	A = 7	B = 8	C = 13	D = 3	E = 2	F = 7
13" - 14"	A = 9.5	B = 10.5	C = 15	D = 4	E = 3	F = 9
15" - 16"	A = 10.5	B = 11.5	C = 17	D = 4	E = 3	F = 11
17" - 18"	A = 11	B = 12.5	C = 19	D = 4	E = 3	F = 13
19" - 20"	A = 12	B = 13.5	C = 21	D = 4	E = 3.5	F = 15
21" - 22"	A = 13	B = 14.5	C = 23	D = 4	E = 3.5	F = 17
23" - 24"	A = 14	B = 15.5	C = 25	D = 4	E = 3.5	F = 19
25" - 26"	A = 14	B = 15.5	C = 27	D = 4	E = 3.5	F = 21



Custom Size Chart

- A. Left _____
- A. Right _____
- B. Left _____
- B. Right _____
- C. _____
- D. Left _____
- D. Right _____
- E. Left _____
- E. Right _____
- F. Standard _____
- G. * _____

*G is for MOD-2QQ—Split Outer Wing Only

Notes:

