



**NXT**  
Generation NEXT

# Pediatric Manual Wheelchair Transport Package Optional



2241 N. Madera Rd

Simi Valley, CA 93065

Phone: (800) 331-8551

Fax: (888) 582-1509

www.freedomdesigns.com

**Bill to:**  
Date: \_\_\_\_\_ P.O. # \_\_\_\_\_  
Company: \_\_\_\_\_  
Buyer: \_\_\_\_\_  
Marked For: \_\_\_\_\_

**Ship to:**  
Company: \_\_\_\_\_  
Address: \_\_\_\_\_  
City: \_\_\_\_\_ State: \_\_\_\_\_ Zip: \_\_\_\_\_  
Phone: \_\_\_\_\_

Description Part No. Retail

Description Part No. Retail

### NXT Frame Type

### Frame Dimensions Specify Frame Width

- Folding NXT - Pediatric** (E1234) NXT-30300 **\$2800**
  - Rigid NXT - Pediatric** (E1233) NXT-30310 **\$2700**
- Note:** A seating system must be purchased separately  
No seating system is provided  
**Note:** Includes Freedom Future Fit Program

- |                           |                           |                           |           |     |
|---------------------------|---------------------------|---------------------------|-----------|-----|
| <input type="radio"/> 10" | <input type="radio"/> 11" | <input type="radio"/> 12" | NXT-30250 | n/c |
| <input type="radio"/> 11" | <input type="radio"/> 12" | <input type="radio"/> 13" | NXT-30210 | n/c |
| <input type="radio"/> 12" | <input type="radio"/> 13" | <input type="radio"/> 14" | NXT-30220 | n/c |
| <input type="radio"/> 13" | <input type="radio"/> 14" | <input type="radio"/> 15" | NXT-30230 | n/c |
| <input type="radio"/> 14" | <input type="radio"/> 15" | <input type="radio"/> 16" | NXT-30240 | n/c |
| <input type="radio"/> 15" | <input type="radio"/> 16" | <input type="radio"/> 17" | NXT-30290 | n/c |
| <input type="radio"/> 16" | <input type="radio"/> 17" | <input type="radio"/> 18" | NXT-30260 | n/c |

### Tilt Activations

- Single Lever Hand Activated Tilt** n/c  
**Note:** Lever installed on and behind right back post tube  
**Note:** Not available with vent and battery tray options
- Dual Lever Hand Activated Tilt** n/c  
**Note:** Must be selected for vent & battery tray options
- Single Pedal Foot Activated Tilt** n/c  
**Note:** Pedal installed inside right rear side frame  
**Note:** Not available with vent and battery tray options

**Note:** The 10" through 16" widths adjust 2 additional inches in width  
Any width between 10" and 18" wide may be specified  
**Note:** Frame width dimensions are measured from the outside of seat tube to outside of seat tube  
**Note:** Vent tray and battery tray option only available on 14" and wider frames

### Back Post Locations Specify Frame Length

- Short Frame & Short Tilt Bracket** NXT-30511 n/c
- 12" NXT-30504 n/c
- 13" NXT-30505 n/c
- 14" NXT-30506 n/c
- 15" NXT-30521 n/c
- 16" NXT-30522 n/c

### Vent & Battery Trays

- Vent Tray - Fixed** (E1029) 11-1000 **\$413**
  - Battery Tray - Fixed** 11-5000 **\$386**
- Note:** Not available with transport option  
**Note:** Only on 14" and wider frames  
**Note:** Not available on short frames

**Note:** 22" & 24" wheels not available with short frame and short tilt bracket  
**Note:** Floor to seat rail height range is 12.5" to 16.5"  
**Note:** Vent tray and battery tray option not available with short frame

### Transport Option

- Transport Package** NXT-99998 **\$150**
- Note:** NXT with transport option is available installed on NXT frame only and with WC-19 approved Freedom Seating Systems installed on NXT  
**Note:** Not available with vent and battery trays

- Medium Frame & Short Tilt Bracket** NXT-30512 n/c
- 14" NXT-30506 n/c
- 15" NXT-30521 n/c
- 16" NXT-30522 n/c
- 17" NXT-30523 n/c
- 18" NXT-30524 n/c

**Note:** 22" & 24" wheels not available with medium frame and short tilt bracket  
**Note:** Floor to seat rail height range is 12.5" to 16.5"

### NXT Frame Colors

#### Powder Coat Applications

- |  |  |
|--|--|
| <input type="radio"/> Black n/c                        | <input type="radio"/> Pacific Blue n/c   |
| <input type="radio"/> Blizzard Blue n/c                | <input type="radio"/> Passion Purple n/c |
| <input type="radio"/> Blue Blast n/c                   | <input type="radio"/> Pink Parfait n/c   |
| <input type="radio"/> Blue Stardust n/c                | <input type="radio"/> Really Red n/c     |
| <input type="radio"/> Cosmic Purple n/c                | <input type="radio"/> Red Sunset n/c     |
| <input type="radio"/> Extreme Green n/c                | <input type="radio"/> Sparkle Green n/c  |
| <input checked="" type="radio"/> Maple Syrup Brown n/c | <input type="radio"/> Twilight n/c       |
| <input type="radio"/> Mystic Teal n/c                  | <input type="radio"/> Yellow n/c         |
| <input type="radio"/> Octane Orange n/c                |  |

- Medium Frame & Tall Tilt Bracket** NXT-30540 n/c
- 14" NXT-30506TP n/c
- 15" NXT-30521TP n/c
- 16" NXT-30522TP n/c
- 17" NXT-30523TP n/c
- 18" NXT-30524TP n/c

**Note:** Tall tilt bracket increases floor to seat rail height by 1.5"  
**Note:** Floor to seat rail height range is 14" to 18.5"  
**Note:** The NXT comes in 3 sizes. Each size has 4" of back post tube adjustment  
Frame depth is measured from the front of the back post tube to the front end of the NXT seat frame  
To determine back post tube location, add seating and hardware thickness (planar back and hardware typically equals 2") to seating cushion depth  
Example: Seating cushion in front of back support  
Seating cushion depth = 12"  
Back and hardware thickness = 2"  
Back post tube location = 14"

### Seat Rail Extensions

Please choose frame size and extension length

- Short  Medium
- 2"  3"
- NXT-30525 n/c
- NXT-30530 n/c

**Note:** Seat rail extensions may limit tilt range with 22" & 24" rear wheels  
Extensions may affect stability when in the tilt position  
Adjusting seat rail forward will help compensate for possible tilt range limitations and instability when in the tilted position

### Powder Coat Applications with High Reflective Starlight

- Black High Reflective Starlight NXT-BHRS **\$150**
  - Blue Blast Reflective Starlight NXT-BBHR **\$150**
  - Maple Syrup Brown Reflective Starlight NXT-MSHR **\$150**
  - Passion Purple High Reflective Starlight NXT-PPHR **\$150**
  - Really Red High Reflective Starlight NXT-RRHR **\$150**
  - Pink Parfait High Reflective Starlight NXT-PINKHR **\$150**
  - Yellow High Reflective Starlight NXT-YHR **\$150**
- Note:** High reflective starlight is a second coating designed to reflect light to make night travel safer

Date: \_\_\_\_\_ P.O.# \_\_\_\_\_

Marked for: \_\_\_\_\_

Description Part No. Retail

Description Part No. Retail

**Back Post Tubes**

- Traditional Bend Push Handles** NXT-30518 n/c
  - Ergo Bend Push Handles** NXT-30519 n/c
- Note:** Push Handle Extensions and Stroller Handle Extensions not recommended with Ergo Bend Push Handles



Traditional



Ergo

**Height Options**

- Short (19" High)** NXT-30515 n/c
  - Medium (23" High)** NXT-30514 n/c
  - Tall (26" High)** NXT-30516 n/c
- Note:** Back post tube heights are measured from top of seat frame to top of handle bend

**Extension Options**

- Push Handle Extension Width Adjustable Removable** NXT-30513 n/c
  - Stroller Handle Extension Width Adjustable Removable** NXT-30526 **\$125**
  - Individual Stroller Handle Extensions (pair) Removable** NXT-30517 **\$100**
- Note:** Stroller handle extensions add approximately 6.5" to push handle height  
**Note:** Push Handle Extensions and Stroller Handle Extensions not recommended with Ergo Bend Push Handles



Push Handle Extension



Stroller Handle Extension



Individual Stroller Push Handles

**Swing Away Hangers**

- Omit Hangers & Footplates** NXT-33000 **(\$30)**
- Pop-Up Swing Away 75° Hanger** NXT-30280 n/c
- Pop-Up Swing Away 90° Hanger** NXT-30281 n/c
- Latch Style Swing Away 75° Hanger** NXT-30282 n/c
- Latch Style Swing Away 90° Hanger** NXT-30283 n/c
- Pop-Up Swing Away Elevating (E0990)** NXT-30279 **\$235**



90° Pop-up



75° Latch Style



Elevating

**Hanger Extensions**

- 4.5" Extension** NXT-36402 **\$ 55**
  - 6.5" Extension** NXT-36403 **\$ 65**
  - High Mount Clamp (K0037)** NXT-36407 **\$100**
- Note:** 6.5" not available with 90° hangers.  
**Note:** High Mount Clamps not available on 75° hangers

**Knee to Heel Measurement** \_\_\_\_\_ **Inches**

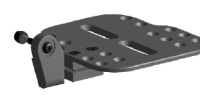
Hanger Extension Configuration	Knee to Heel Range (from seat rail)
Hanger and high mount clamp	4" - 9"
Hanger only	6" - 9"
Hanger and 4.5" extension	to 13.5"
Hanger and 6.5" extension	to 15.5"

**Foot Plate Options**

- Omit Footrest Plate** NXT-36404 **(\$15)**
- Composite Flip Up** NXT-17070 n/c
- Kids Aluminum Angle Adj. Flip Up (K0040)** NXT-36020 **\$150**  
**Note:** For Frames 14" wide and under
- Heel Loop (E0951)** NXT-36022 **\$ 50**
- Adult Aluminum Angle Adj. Flip Up with Heel Loop (K0040) (E0951)** NXT-36021 **\$150**  
**Note:** For Frames 15" wide and over
- Omit Heel Loop** NXT-36023 n/c
- Aluminum Angle Adj. Footboard Removable** NXT-36029 **\$150**



Composite Flip-up Footplate



Angle Adjustable Flip-up Footplate



Removable Footboard

**Armrests**

**Armrests Attached to Back Post Tube**

- Omit Flip Back Arms** NXT-38209 **(\$20)**
- Flip Back Standard 13" Long** NXT-38204 n/c
- Flip Back Long 16" Long** NXT-38202 n/c
- Flip Back Telescoping (E0973)** NXT-38208 **\$100**
- Locking Flip Back Std. 13" Long (E0973)** NXT-38201 **\$235**
- Locking Flip Back Long 16" Long (E0973)** NXT-38200 **\$235**
- Locking Flip Back Telescoping (E0973)** NXT-38207 **\$260**

**Armrests Attached to Seat Frame**

- Single Post Height Adj. Removable (E0973)** NXT-38203 **\$235**
- Dual Post Removable** NXT-38205 n/c
- Dual Post Height Adj. Flip Back Removable (E0973)** NXT-38206 **\$245**  
**Note:** Dual post Armrest Options not available on short NXT frame

**Armrest Pad**

- Desk Length** NXT-38213 n/c
- Full Length** NXT-38214 n/c  
**Note:** Full length on 16" armrests only

**Seat Rail to Top of Armrest Measurement** \_\_\_\_\_ **Inches**



Locking Flip Back Armrest



Single Post Height Adjustable Armrest



Dual Post Height Adjustable Removable Armrest

Date: \_\_\_\_\_ P.O.# \_\_\_\_\_

Marked for: \_\_\_\_\_

Description Part No. Retail

Description Part No. Retail

**Front Caster Wheels**

- Omit Caster Wheels** NXT-34333 n/c
- 3" Poly** NXT-34888 \$ 55
- 3" Light Up** NXT-34111 \$ 55  
Note: 3" casters are recommended for low frame configurations
- 4" Poly** NXT-40000 \$ 65
- 4" Light Up** NXT-41000 \$ 99
- 4" x 1.4" Poly Aluminum Mag** NXT-43000 \$ 90
- 5" Poly** NXT-34555 n/c
- 5" x 1.5" Poly** NXT-34222 \$ 85
- 5" x 1.4" Poly Aluminum Mag** NXT-42000 \$ 90
- 6" Poly** NXT-34666 n/c
- 6" x 1.5" Poly** NXT-34999 \$ 85
- 6" x 1.4" Poly Aluminum Mag** NXT-44000 \$ 90
- 6" x 2" Poly with Tread** NXT-34444 \$ 90
- 6" Pneumatic (E2214 / E2215)** NXT-34667 \$ 75  
Note: All 6" casters not available with all 16" rear wheel options
- 7" Poly** NXT-34777 \$ 75
- 7" x 1.5" Poly** NXT-34000 \$116
- 7" x 2" Poly** NXT-34200 \$116  
Note: All 7" casters not available with all 12" rear wheel options



5" Poly



5" x 1.5" Poly



5" x 1.4" Poly Aluminum Mag

**Rear Wheels, Tires and Accessories  
Mag Wheel Tire Options**

- Omit Wheels and Axles** NXT-31524 (\$55)
- 12" Pneumatic Mag** NXT-31525 n/c
- 12" Poly Mag (E2218)** NXT-31526 \$ 35
- 12" Semi Pneumatic Mag** NXT-31523 \$165  
Note: Handrims are not available with 12" wheel options  
Note: All 12" wheels not available with all 7" caster options
- 16" Pneumatic Mag** NXT-31530 \$ 40  
Note: All 16" wheels not available with all 6" caster options
- 18" Pneumatic Mag** NXT-31533 \$ 35
- 20" Pneumatic Mag w/Alum. Handrim** NXT-31527 n/c
- 22" Pneumatic Mag w/Alum. Handrim** NXT-31528 n/c
- 24" Pneumatic Mag w/Alum. Handrim** NXT-31529 n/c
- Omit Handrims** NXT-31006 (\$25)  
Note: 22" & 24" wheels not available with short tilt bracket  
Note: Patented double locking safety axle receiver included at no charge

**Spoke Wheel Tire Options**

- 20" Pneumatic Spoke** NXT-31540 \$200
- 22" Pneumatic Spoke** NXT-31541 \$200
- 24" Pneumatic Spoke** NXT-31542 \$200
- Omit Handrims** NXT-31006 (\$25)  
Note: 22" & 24" wheels not available with short tilt bracket  
Note: Plastic coated handrims not available with spoke wheel options  
Note: Patented double locking safety axle receiver included at no charge

**Wheel Accessories**

- Aluminum Handrims 16" & 18" (pr.)** NXT-31007 \$166
- Plastic Coated Handrims (pr.)** NXT-31005 \$117  
Note: Plastic coated handrims not available with spoke wheels  
Note: Handrims are not available with all 12" wheel options
- Airless Inserts (E2213)** NXT-31000 \$ 75

**Wheel Locks**

- Push to Lock** NXT-31501 n/c
- Pull to Lock** NXT-31506 n/c
- Wheel Lock Handle Extensions (E0961)** NXT-31801 \$ 60
- Foot Actuated Lock** NXT-31508 n/c  
Note: Not available with vent tray or battery tray options  
Note: If both foot actuated lock and manual wheel locks are ordered together, an "off-chair" charge will apply

**Rear Anti-Tip**

- Anti-Tip Tubes—Flip (E0971)** NXT-31603 \$ 95  
Note: One pair of flip-up anti-tip tubes.
- Anti-Tip Tubes with Curb Assist** NXT-31600 \$ 95  
Note: Each anti-tip tube pair includes one with curb assist

**Floor To Seat Rail Height Matrix**

Rear Wheel	Front Caster	Short & Medium Frames Short Tilt Bracket	Medium & Long Frames Tall Tilt Bracket
12"	3"	13"	14.5"
12"	3"	15"	16.5"
12"	4"	15.5"	17"
12"	4"	16"	17.5"
12"	5"	15.5"	17"
12"	5"	16"	17.5"
12"	6"	15.5"	17"
12"	6"	16"	17.5"
16"	3"	12.5"	14"
16"	4"	13.5"	15"
16"	3"	14"	15.5"
16"	4"	14"	15.5"
16"	5"	14.5"	16"
16"	3"	15"	16.5"
16"	5"	15"	16.5"
18"	3"	13.5"	15"
18"	3"	14"	15.5"
18"	4"	14"	15.5"
18"	4"	15"	16.5"
18"	5"	15.5"	17"
18"	6"	15.5"	17"
18"	6"	16"	17.5"
20"	5"	15.5"	17"
20"	6"	15.5"	17"
22"	7"	n/a	18"
24"	7"	n/a	18.5"

**Rider Capacity - 225 lbs.**

Date: \_\_\_\_\_ P.O.# \_\_\_\_\_

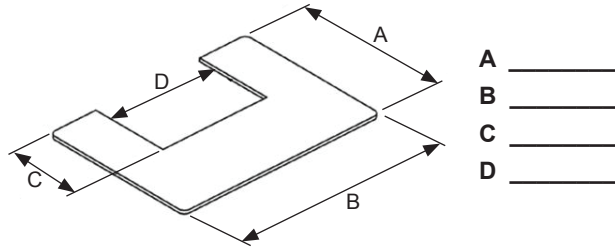
Marked for: \_\_\_\_\_

Description	Part No.	Retail
-------------	----------	--------

Description	Part No.	Retail
-------------	----------	--------

**Accessories**

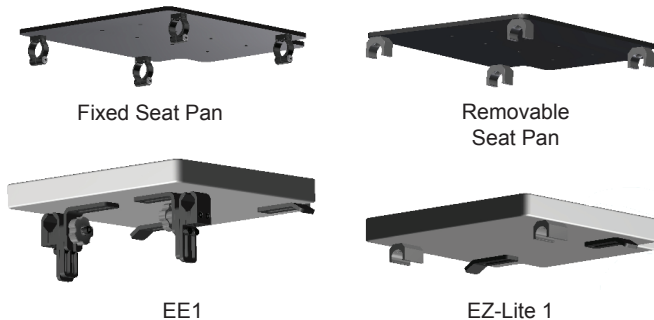
- Medical necessities Bag** (black only)    NXT-23207    \$ 67
- Back Pack** (black only)    NXT-TFBP    \$ 55
- Canopy**    NXT-38750    \$150
- Canopy with Visor**    NXT-38756    \$175  
Note: Canopies on NXT with transport option must be removed during transport



**Trays / Lapboards (E0950)**

- Lexan Tray - No Hardware**    08-8000    \$156
- Lexan Tray - Adj. Knob Hardware**    08-6000    \$215
- EZ-Lite Lexan Tray - .25" Thick**    08-12000    \$167
- EZ-Lite Lexan Tray with Ribs**    08-13000    \$179
- Lexan Tray with 1" Locking Hooks**    08-15000    \$198
- .25" Lexan Tray -without Hardware**    08-17000    \$ 93

**Solid Seat Options**



- Fixed Solid Seat Pan**    NXT-39010    \$100  
 Width \_\_\_\_\_ X Depth \_\_\_\_\_
- Removable Solid Seat Pan**    NXT-39012    \$150  
 Width \_\_\_\_\_ X Depth \_\_\_\_\_
- Solid Seat with Econo-EZE Hardware**    EE1    \$548  
Note: Uses 30 degree brackets at rear of cushion
- Solid Seat with EZ-Lite Hardware**    EZ Lite 1    \$400  
Note: Uses 30 degree brackets at rear of cushion

**Solid Back Options**

- Easy Conforming Back - Standard**    102-12000    \$839  
Note: Uses 4 point hardware
- Easy Conforming Back - Standard with 2 J/L's, Glide Locks & Hinges**    EZ Conf 2    \$839  
Note: Uses seat to back attachment hinge
- Mod-2Econo2**    Mod-2Econo2    Add \$ 45  
Note: 2 Econo Eze clamps instead of 2 J/L's and Glide Locks for EZ Conf2
- Split Wing**    Mod-2QQ    \$186

**Head Support Options**

- Rock & Roll Headrest Hardware**    7708    \$385
- Chubbie Head Support Pad**    7756    \$184  
 Small     Medium     Large
- Low Profile Occipital Headrest Pad**    7757    \$133  
 Small     Medium     Large



**\*Pelvic Positioning Belts (E0978)**

**Streamline - Two Point Padded**

- Center Pull - Metal Push Button Buckle**    SB-3332    \$ 88
- Center Pull - Metal Push Button Buckle with 1" Buckle & .75" Webbing**    SB-3332-1    \$ 88
- Center Pull - EZ Release Push Button Buckle**    SB-3334    \$ 88

**Streamline - Non- Padded**

- Center Pull - Metal Push Button Buckle Hipster - Two Point Padded**    SB-3410    \$ 29
- Center Pull - Metal Push Button Buckle**    HIP-3002    \$109
- Center Pull - EZ Release Push Button Buckle**    HIP-3004    \$109

**Hipster - Non-Padded**

- Center Pull - Metal Push Button Buckle**    HIP-3021    \$ 50
- Center Pull - Metal Push Button Buckle with 1" Buckle & .75" Webbing**    HIP-3021-1    \$ 50

\* Note: Many other belts are available - those shown above include some of our most popular  
 Ask your customer service representative about additional styles